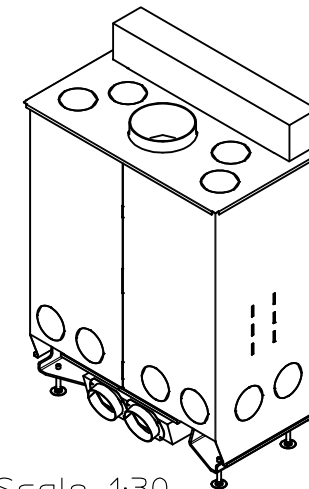


Scale 1:30



Scale 1:30

ULTIME D Patented

metalfire

Technical Document

Model: ULTIME D MF 800-50 WHE 1S

Dimensions (mm)

- combustion opening WxH: 836x506
- external WxDxH: 1060x619x1561
- fresh air: 2xø150
- diameter flue: ø250

Technical Data

- capacity: 16.6kW
- efficiency capacity: 80.2%
- CO (volume with 13%O₂): 0.07%
- dust (volume with 13%O₂): 32mg/m³
- weight: 405kg
- Air intake to convection: minimum 360cm² (2xø150)
- Air exhaust to convection: minimum 720cm² (4xø150)

Specifications

- inside finishing: heat-resistant black paint
- vermiculite insulation plates
- convection jacket in galvanized steel
- cast iron stoke grate
- back and sides: ribbed cast iron
- interior finishing: ORIGINAL (ribbed cast iron)

Options

- Promat insulation kit
- Finishing frame

Table: prescribed insulation thickness (mm)

Combustable finishing material					
	A	B	C	D	E
Test report (TC = 0,14 W/mK)	75	NC	120	113	40
Metalfire recommended Promasil 1100L (TC = 0,081 W/mK)	50	NC	70	65	25
Non-combustable finishing material					
non-combustable materials (structural building items EXCLUDED e.g. load bearing walls)	0	0	0	0	0
TC = thermal conductivity NC = non-combustable					

First aid and technical support:

- support@metalfire.eu
- +32 (0)9 261 50 57

scale 1:20

www.metalfire.eu

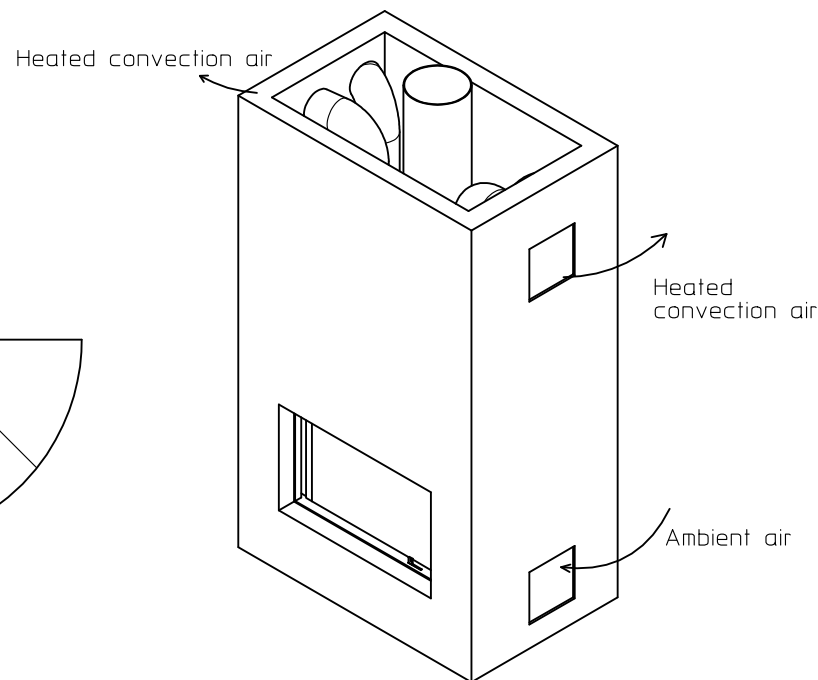
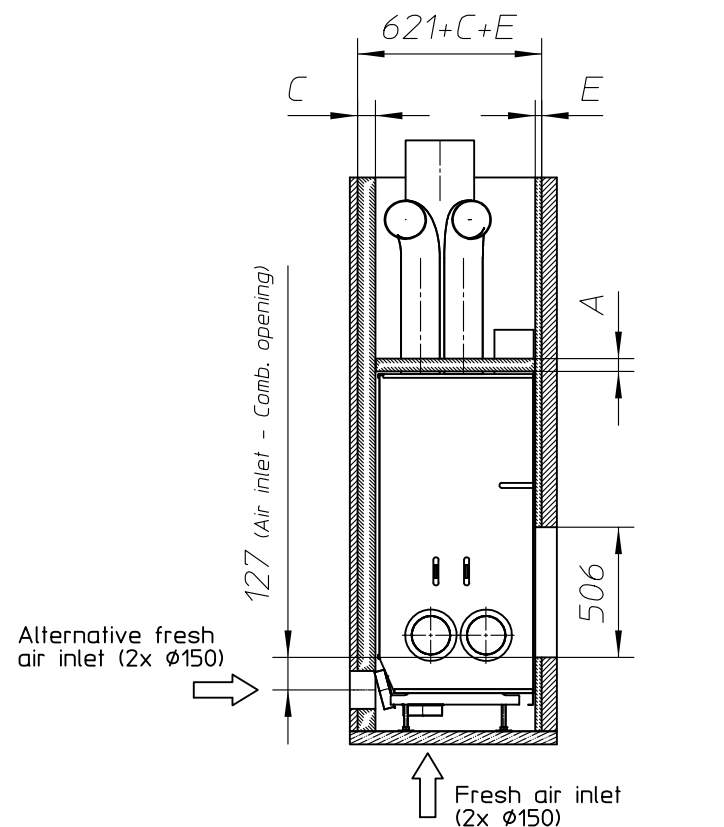
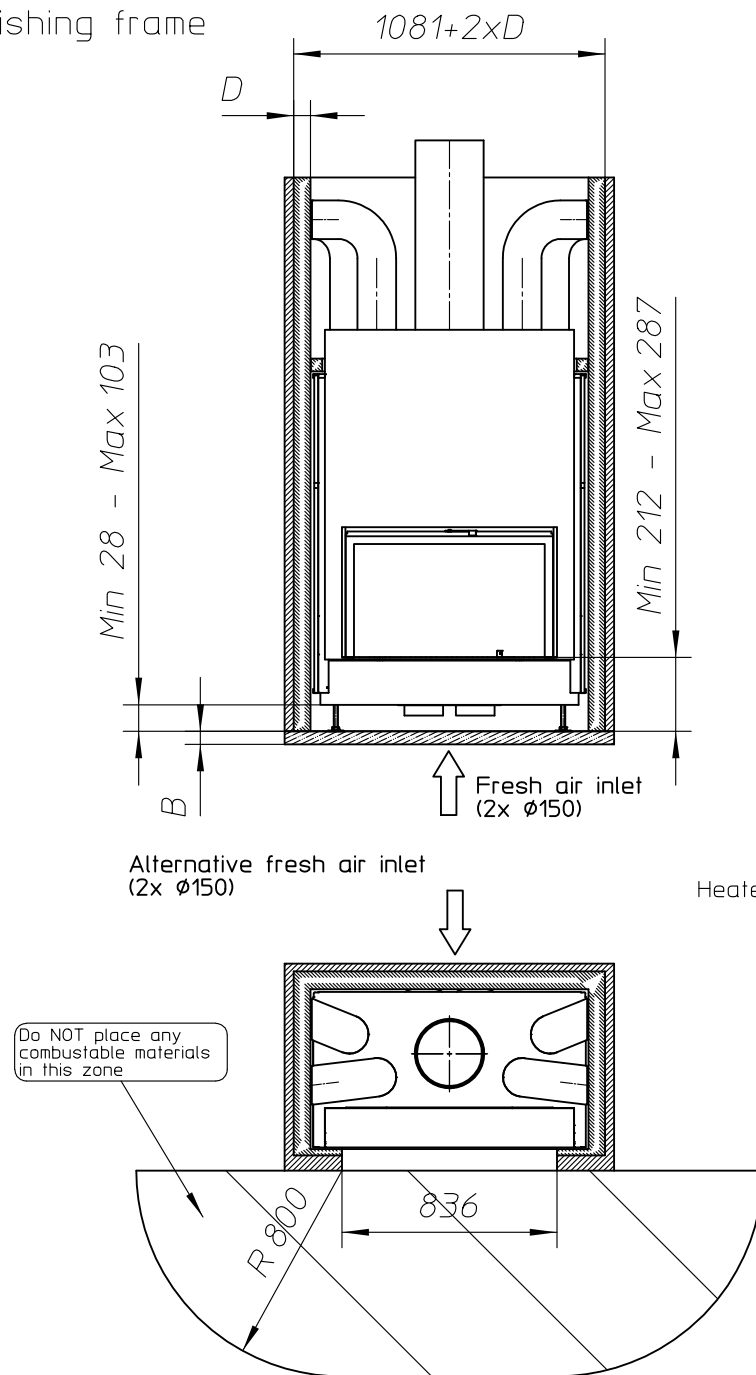
EN 13229

General dimensional tolerances up to 6mm
Metalfire preserves the right to modify specifications without previous notice

Rev.
A

CE
Sheet
1/5

Without finishing frame



ULTIME D Patented

metalfire

Technical Document

Model: ULTIME D MF 800-50 WHE 1S

Dimensions (mm)

- combustion opening WxH: 836x506
- external WxDxH: 1060x619x1561
- fresh air: 2xØ150
- diameter flue: Ø250

Technical Data

- capacity: 16.6kW
- efficiency capacity: 80.2%
- CO (volume with 13%O₂): 0.07%
- dust (volume with 13%O₂): 32mg/m³
- weight: 405kg
- Air intake to convection: minimum 360cm² (2xØ150)
- Air exhaust to convection: minimum 720cm² (4xØ150)

Specifications

- inside finishing: heat-resistant black paint
- vermiculite insulation plates
- convection jacket in galvanized steel
- cast iron stoke grate
- back and sides: ribbed cast iron
- interior finishing: ORIGINAL (ribbed cast iron)

Options

- Promat insulation kit
- Finishing frame

Table: prescribed insulation thickness (mm)

Combustable finishing material					
	A	B	C	D	E
Test report (TC = 0,14 W/mK)	75	NC	120	113	40
Metalfire recommended Promasil 1100L (TC = 0,081 W/mK)	50	NC	70	65	25
Non-combustable finishing material					
non-combustable materials (structural building items EXCLUDED e.g. load bearing walls)	0	0	0	0	0
TC = thermal conductivity NC = non-combustable					

First aid and technical support:

- support@metalfire.eu
- +32 (0)9 261 50 57

scale 1:20

Rev.
A

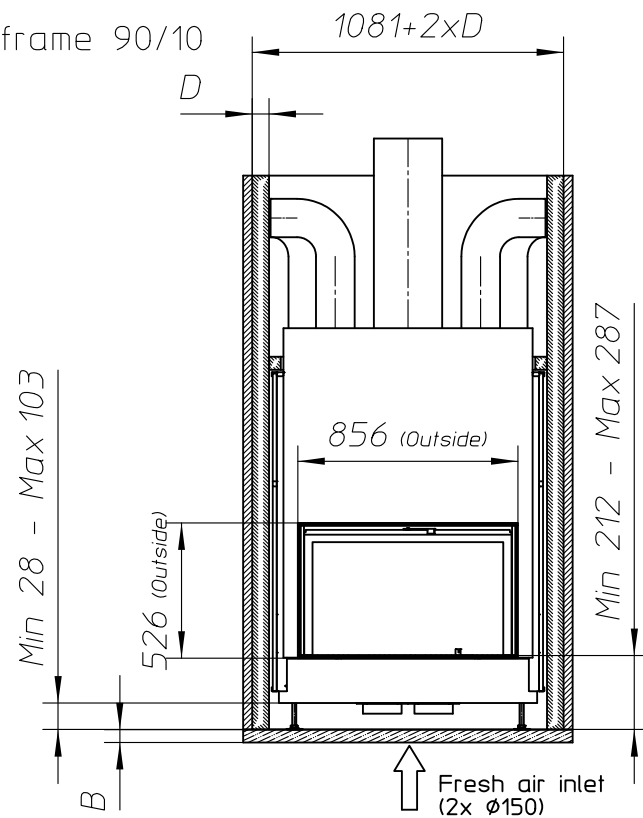
www.metalfire.eu EN 13229

General dimensional tolerances up to 6mm
Metalfire preserves the right to modify specifications without previous notice

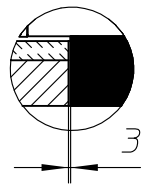
Sheet
2/5

- Combustable finishing material
- Non-combustable finishing material
- Insulation
- Insulation thickness => see table

With finishing frame 90/10

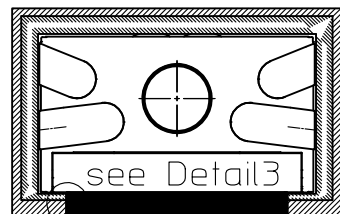


Detail3
Scale 1:10



Alternative fresh air inlet
(2x Ø150)

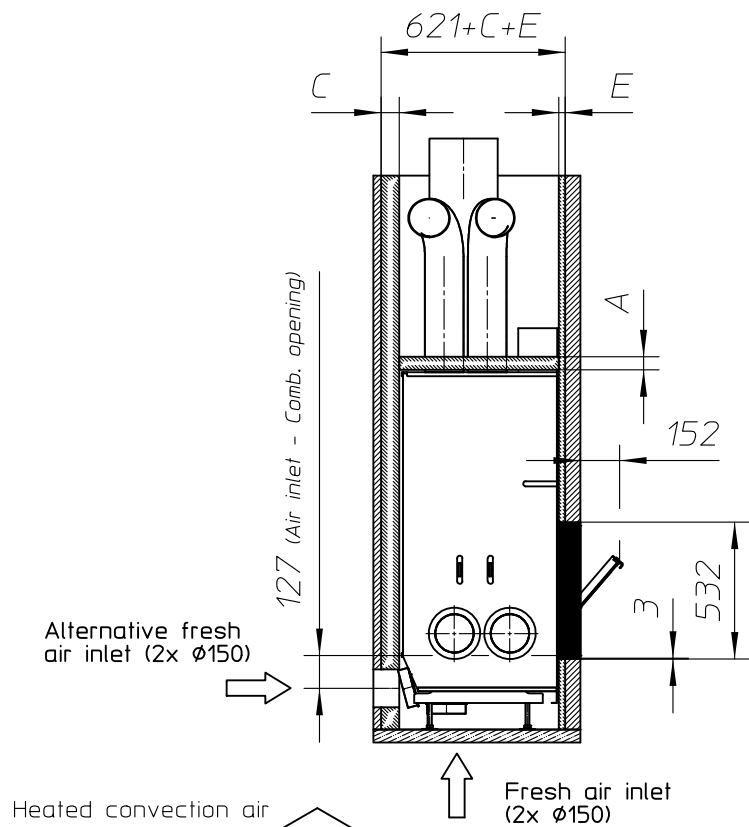
Do NOT place any
combustable materials
in this zone



see Detail3

862

- Combustible finishing material
- Non-combustible finishing material
- Insulation
- Insulation thickness => see table



Heated convection air

Fresh air inlet
(2x Ø150)

Heated convection air

Ambient air

ULTIME D Patented

metalfire

Technical Document

Model: ULTIME D MF 800-50 WHE 1S

Dimensions (mm)

- combustion opening WxH: 836x506
- external WxDxH: 1060x619x1561
- fresh air: 2xØ150
- diameter flue: Ø250

Technical Data

- capacity: 16.6kW
- efficiency capacity: 80.2%
- CO (volume with 13%O₂): 0.07%
- dust (volume with 13%O₂): 32mg/m³
- weight: 405kg
- Air intake to convection: minimum 360cm² (2xØ150)
- Air exhaust to convection: minimum 720cm² (4xØ150)

Specifications

- inside finishing: heat-resistant black paint
- vermiculite insulation plates
- convection jacket in galvanized steel
- cast iron stoke grate
- back and sides: ribbed cast iron
- interior finishing: ORIGINAL (ribbed cast iron)

Options

- Promat insulation kit
- Finishing frame

Table: prescribed insulation thickness (mm)

Combustable finishing material					
	A	B	C	D	E
Test report (TC = 0,14 W/mK)	75	NC	120	113	40
Metalfire recommended Promasil 1100L (TC = 0,081 W/mK)	50	NC	70	65	25
Non-combustable finishing material					
non-combustable materials (structural building items EXCLUDED e.g. load bearing walls)	0	0	0	0	0
TC = thermal conductivity NC = non-combustable					

First aid and technical support:

- support@metalfire.eu
- +32 (0)9 261 50 57

scale 1:20

www.metalfire.eu

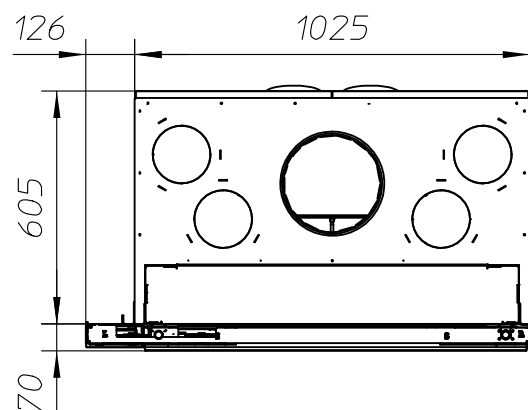
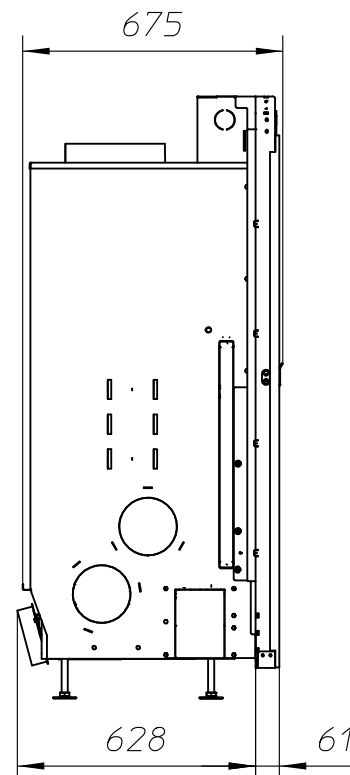
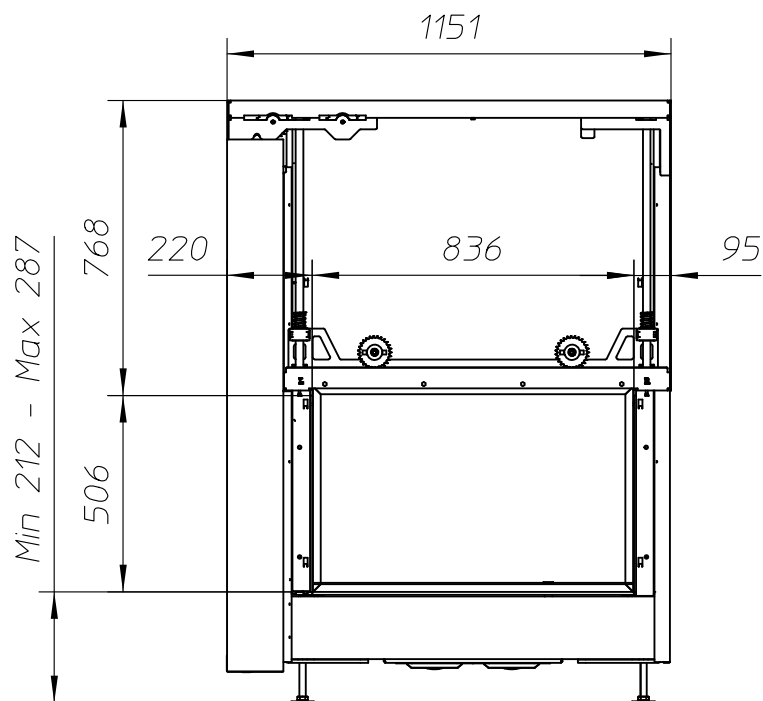
EN 13229

General dimensional tolerances up to 6mm
Metalfire preserves the right to modify specifications without previous notice

Rev.
A

Sheet
3/5

WITH FIRESCREEN - NO FINISHING FRAME



ULTIME D Patented

metalfire

Technical Document

Model: ULTIME D MF 800-50 WHE 1S

Dimensions (mm)

- combustion opening WxH: 836x506
- external WxDxH: 1151x675x1561
- fresh air: 2xØ150
- diameter flue: Ø250

Technical Data

- capacity: 16.6kW
- efficiency capacity: 80.2%
- CO (volume with 13%O₂): 0.07%
- dust (volume with 13%O₂): 32mg/N³
- weight: 405kg
- Air intake to convection: minimum 360cm² (2xØ150)
- Air exhaust to convection: minimum 720cm² (4xØ150)

Specifications

- inside finishing: heat-resistant black paint
- vermiculite insulation plates
- convection jacket in galvanized steel
- cast iron stoke grate
- back and sides: ribbed cast iron
- interior finishing: ORIGINAL (ribbed cast iron)

First aid and technical support:

- support@metalfire.eu
- +32 (0)9 261 50 57

scale 1:20

Rev.
A

www.metalfire.eu EN 13229

CE

General dimensional tolerances up to 6mm
Metalfire preserves the right to modify specifications without previous notice

Sheet
4/5

Model: ULTIME D MF 800-50 WHE 1S

Dimensions (mm)

- combustion opening WxH: 836x506
- external WxDxH: 1151x749x1561
- fresh air: 2xØ150
- diameter flue: Ø250

Technical Data

- capacity: 16.6kW
- efficiency capacity: 80.2%
- CO (volume with 13%O₂): 0.07%
- dust (volume with 13%O₂): 32mg/N³
- weight: 405kg
- Air intake to convection: minimum 360cm² (2xØ150)
- Air exhaust to convection: minimum 720cm² (4xØ150)

Specifications

- inside finishing: heat-resistant black paint
- vermiculite insulation plates
- convection jacket in galvanized steel
- cast iron stoke grate
- back and sides: ribbed cast iron
- interior finishing: ORIGINAL (ribbed cast iron)

First aid and technical support:

- support@metalfire.eu
- +32 (0)9 261 50 57

scale 1:20

www.metalfire.eu EN 13229

General dimensional tolerances up to 6mm
Metalfire preserves the right to modify specifications without previous noticeRev.
A

CE

Sheet
5/5